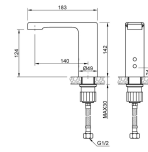


## Automatic Tap Batteries or Electricity Stainless Steel



### Description

Electronic stainless steel faucet for countertop installation. It is activated by a built-in infrared

sensor and is powered by 4 AA batteries supplying 6V or can be connected to the mains via a transformer (220V 50/60 hz) sold separately, please contact us.

- Includes filter and all installation accessories.
- POM plastic components.
- Chrome-plated brass body CW617N to EN248 standard.
- Activated by infrared sensor. Detection range of 12 to 18 cm.
- Fixed spout with replaceable M24 aerator.
- Standby consumption: <math><0.5\text{ mW}</math>
- Working temperature: 1 - 80C.
- Maximum recommended temperature 60C.
- Plastic particle filter included
- Flow rate of 6 l / min with 3bar dynamic pressure.
- Dimensions: 142 height x 49 width x 183 depth

### Features

Marca

Categoria Automatic Taps

### Price

Price 155,80 €

Without VAT 126,67 €

### Product in Store

[Automatic Tap Batteries or Electricity Stainless Steel](#)

(mm)

Maintenance: use water and pH-neutral soap for cleaning, then wipe dry with a clean cloth.

When cleaning the bathroom with aggressive products, the soap dish should be protected from splashes.

CE. Complies with the European Electrical Safety Directive 2014/35/EU, the Electromagnetic Compatibility Directive EMC 2014/30/EU and the Construction Products Directive 305/2011/EU in accordance with standards EN817:2008 and EN 15091:2013.

For more information, see the technical data sheet.

## Documents

[Technical Data Sheets - PT \(248.71 Kb\)](#)